



*jordan fishwick*

10 Valley Road, Mossways Park, SK9 5PA  
Price £120,000



## Valley Road Wilmslow SK9 5PA

Price £120,000



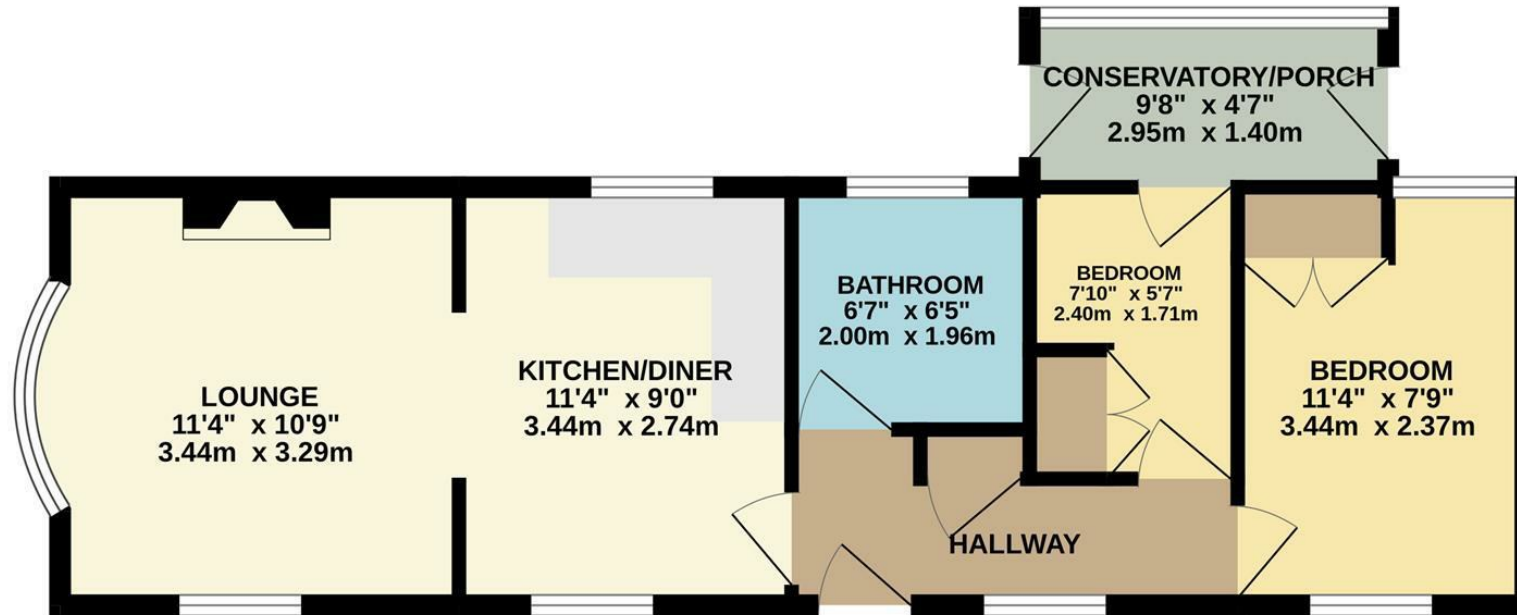
OVER 50's.....Assisted move scheme available for interested parties who have a property to sell. Located on the ever popular Mossway's Park development within Wilmslow, this vacant no chain two bedroom park Home has been recently redecorated throughout. The accommodation comprises of an entrance hallway with useful storage cupboard. Partially open plan living and dining kitchen. The living room features an electric fireplace and windows to dual aspects. The kitchen is fitted with a matching range of base and high-level units. There is space for washing machine and fridge freezer and an integrated oven and four ring gas hob. Both bedroom one and two consist of built-in fitted wardrobes providing additional storage. The family bathroom consists of a three piece white bathroom suite with thermostatically controlled shower over the bath. The property is UPVC double glazed and heated via a combination boiler. Additionally, there is a small lean-to conservatory which is accessed via bedroom two. This conservatory has two external UPVC double glazed doors leading to the perimeter and rear patio area. The small rear garden faces a mature and leafy outlook. There is an external shed providing additional storage and off road parking.







# GROUND FLOOR



Measurements are approximate. Not to scale. Illustrative purposes only  
Made with Metropix ©2025



These particulars are believed to be accurate but they are not guaranteed and do not form a contract. Neither Jordan Fishwick nor the vendor or lessor accept any responsibility in respect of these particulars, which are not intended to be statements or representations of fact and any intending purchaser or lessee must satisfy himself by inspection or otherwise as to the correctness of each of the statements contained in these particulars. Any floorplans on this brochure are for illustrative purposes only and are not necessarily to scale.

Offices at: Chorlton, Didsbury, Disley, Hale, Glossop, Macclesfield, Manchester Deansgate, Manchester Whitworth Street, New Mills, Sale, Wilmslow and Withington

36-38 Alderley Road, Wilmslow SK91JX  
**01625 532000**

wilmslow@jordanfishwick.co.uk  
www.jordanfishwick.co.uk